

Chevy Chase Drive 24-Inch Water Transmission Main

Project No. BL5057A09

May 27, 2021



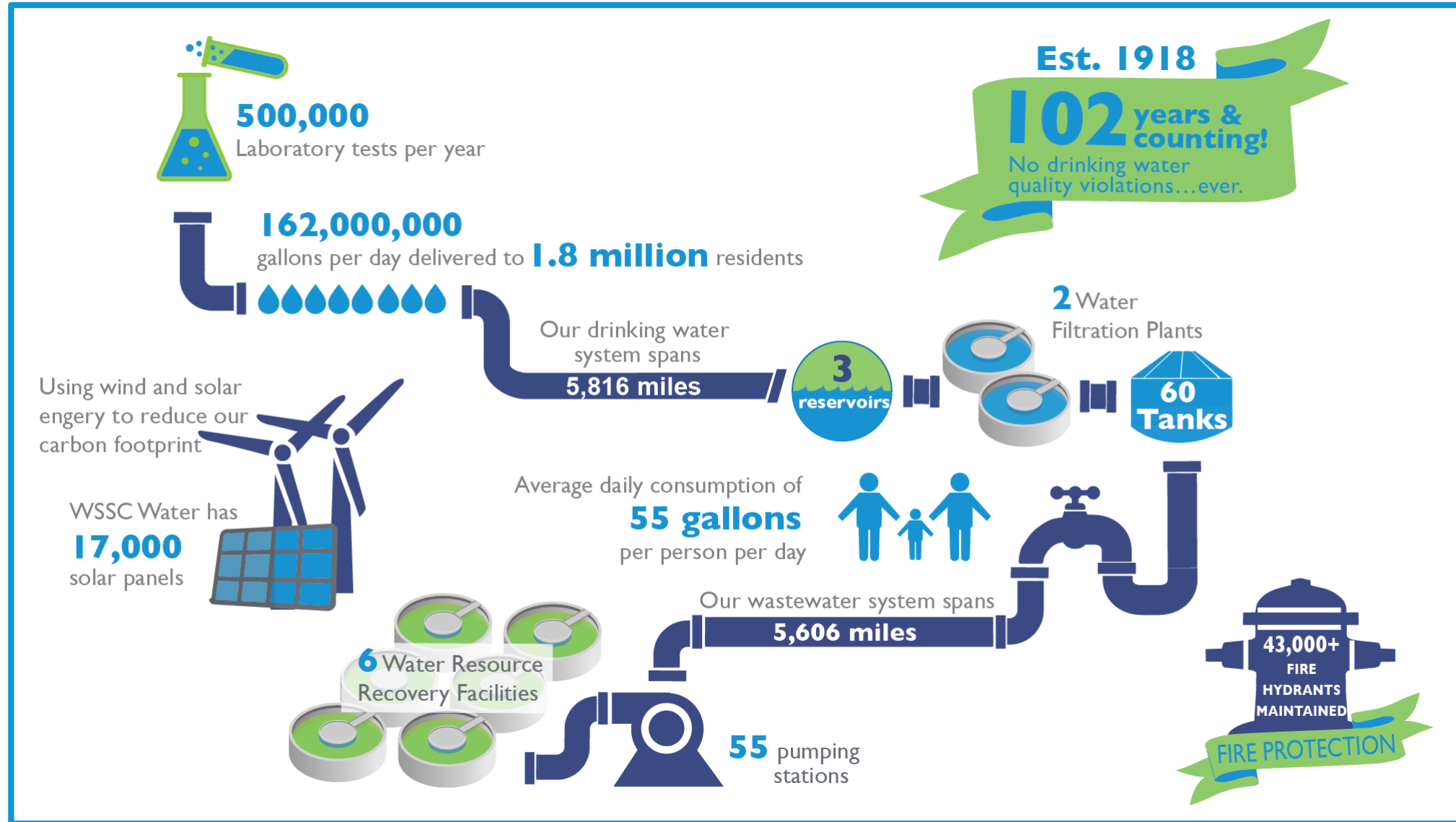
AGENDA

- Introduction to Project Team
- WSSC Water Overview
- Project Overview
- Project Map
- Estimated Construction Schedule
- What to Expect During Construction
- Project Summary
- Questions & Answers

Project Team

- Ling Li, Design Project Manager
301-206-8745, Ling.Li@wsscwater.com
- April Wilt, Technical Contracts Supervisor (Construction)
301-206-4307, April.Wilt@wsscwater.com
- David Wilkins, Customer Advocate
301-206-4371, David.Wilkins@wsscwater.com
- John “Doug” Sievers, Urban Forester
(301) 206-8074, John.Sievers@wsscwater.com
- EBA Engineering, Engineering Design Consultants

WSSC Water Overview

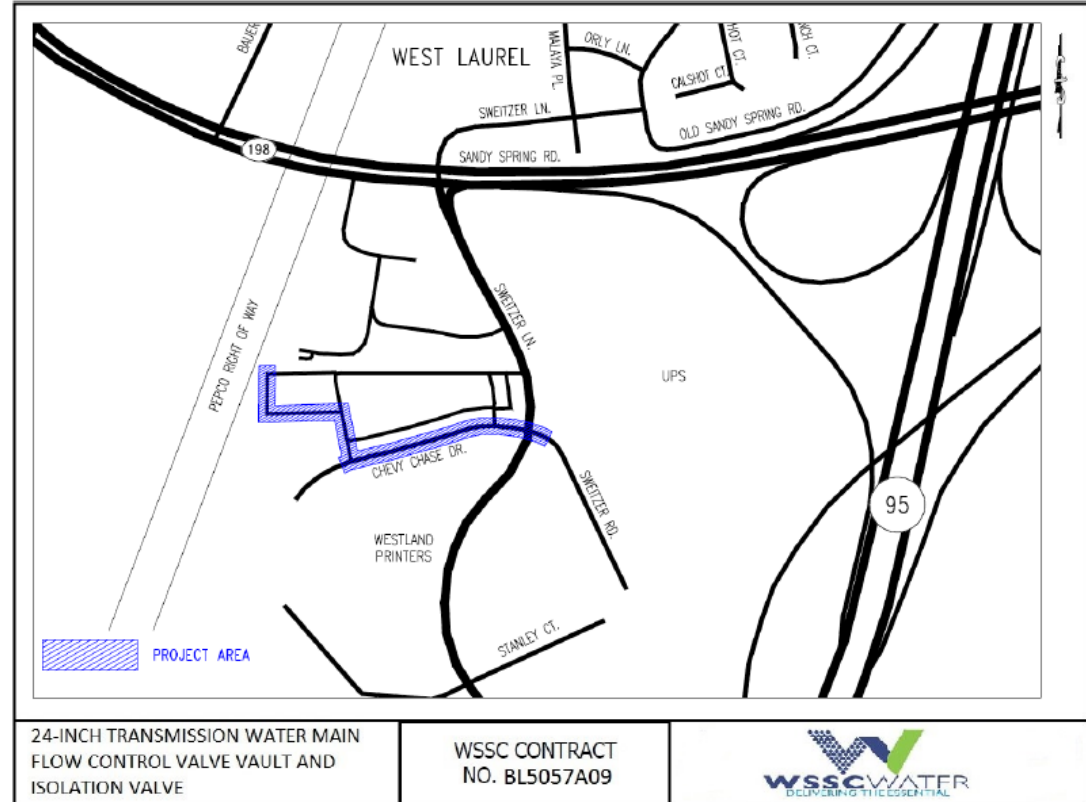


Project Overview

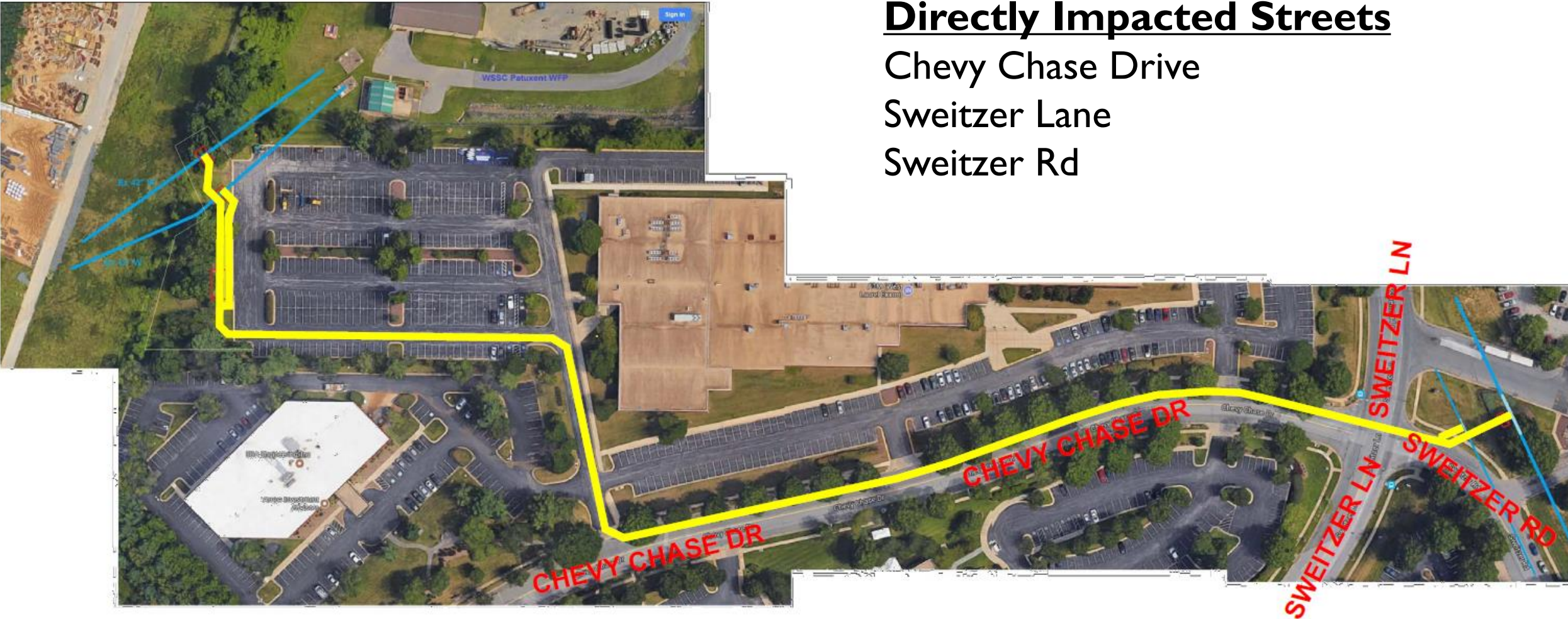
- WSSC Water is strategically strengthen the water supply system throughout our service area by adding new transmission mains, the objective is to enhance service and reliability to our customers.
- This project includes installing 1,991 feet of 24-inch water transmission pipes, flow controls valves and vaults and Supervisory Control and Data Acquisitions (SCAD) equipment.
- Currently Laurel and lower areas in Prince George's County are getting their water supply from the Patuxent Water Filtration Plant through two transmission mains from the plant. This project will build a bypass from the existing pipes to the new 24-inch pipe, so in the event the plant experiences a failure, water supply to these areas will not be adversely impacted.
- The new water mains will be zinc-coated, ductile iron pipe with an exterior coating to provide extra corrosion protection, giving the pipes a life expectancy of at least 100 years.

Project Overview

- The new watermain and valve vaults will be installed within the public Right-of-Way/WSSC Water's easement underground along Chevy Chase Drive and Sweitzer Lane.
- No water house connections (service lines) and fire hydrants will be installed.
- WSSC Water coordinates with local and state agencies, as well as other utilities for all planned work to avoid potential conflict and minimize disturbances to neighborhoods.



Project Map



Directly Impacted Streets

- Chevy Chase Drive
- Sweitzer Lane
- Sweitzer Rd

Estimated Construction Schedule

Anticipated Construction Start:	Fall 2021
Estimated Construction Completion:	Summer 2022

Construction schedules are estimated and weather permitting

Operational Changes in response to Covid-19

- WSSC Water has implemented protocols that align with recommendations from local, state, and federal public health authorities.
- Working to minimize impact
 - Facial masks (when indoors) and physical distancing
- All WSSC Water employees and contractors are required to refrain from coming to work if displaying symptoms of COVID-19.
 - We have implemented robust internal contact tracing and quarantine requirements.
- Earlier notification to customers
 - Contact via handouts



What to Expect During Construction

- Anticipated Work Hours: Monday-Friday, 8:00 a.m. – 4:00 p.m.
 - Work may occasionally extend beyond these hours to complete specific tasks.
- Construction activities will include:
 - Field reviews and inspections
 - Survey crews
 - Test pits
 - Construction crews and heavy machinery
- Reliable water and sewer service will be maintained during construction
 - Short water shutdowns of up to 8 hours may be required
 - Advanced notification (48-72 hours) of these shutdowns will be provided



What to Expect During Construction

- Open-cut construction method, which involves cutting and excavating a section of the pavement.
- This construction method does create noise and dust.



Temporary Water Service Installation

- Above-ground (bypass) pipes may be installed to maintain water service to your home.
 - Bypass pipes are not used in cold weather months
- These pipes will be placed along the roadway edge and provide the same quality of water to your home.



Traffic Impacts

- Certain construction activities may require temporary changes to traffic patterns
 - Traffic will be managed to minimize community disruptions
- Access will be maintained to homes during construction
 - Access into homes is **NOT** required
 - Access onto private property is generally **NOT** required
- Parking restrictions
 - WSSC Water will provide 48-hour advance (denoted by “No Parking” signs) notice prior to any parking restrictions
 - Any vehicles that have not been removed from the designated area will be towed to a nearby street at no cost to the owner.
- Final restoration of sidewalks, roadways and landscaping will take place within 90 days of construction completion.



Signage and Restoration

- Construction signs with contact persons will be placed throughout the project area
- Projects completed during the winter months will be permanently paved and restored to their original state or better in the following spring.



Project Summary

- This project is to provide an interconnection between the major supply mains coming from the Patuxent Water Filtration Plant in Laurel.
- This interconnecting main will provide the ability to transfer water between major supply zones in case of emergency outages or maintenance outages of the major supply mains.
- WSSC Water will minimize service disruptions during construction.
- WSSC Water will coordinate work activities with property owners in the project area.
- WSSC Water will restore all areas impacted by construction activities at the end of the project.
- WSSC Water's goal is to provide a reliable water system to customers.

