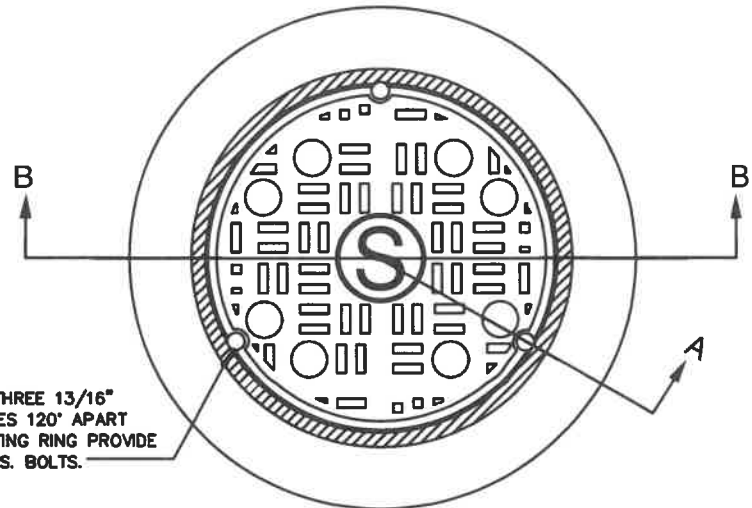
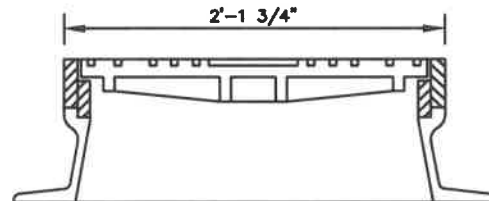


SECTION A

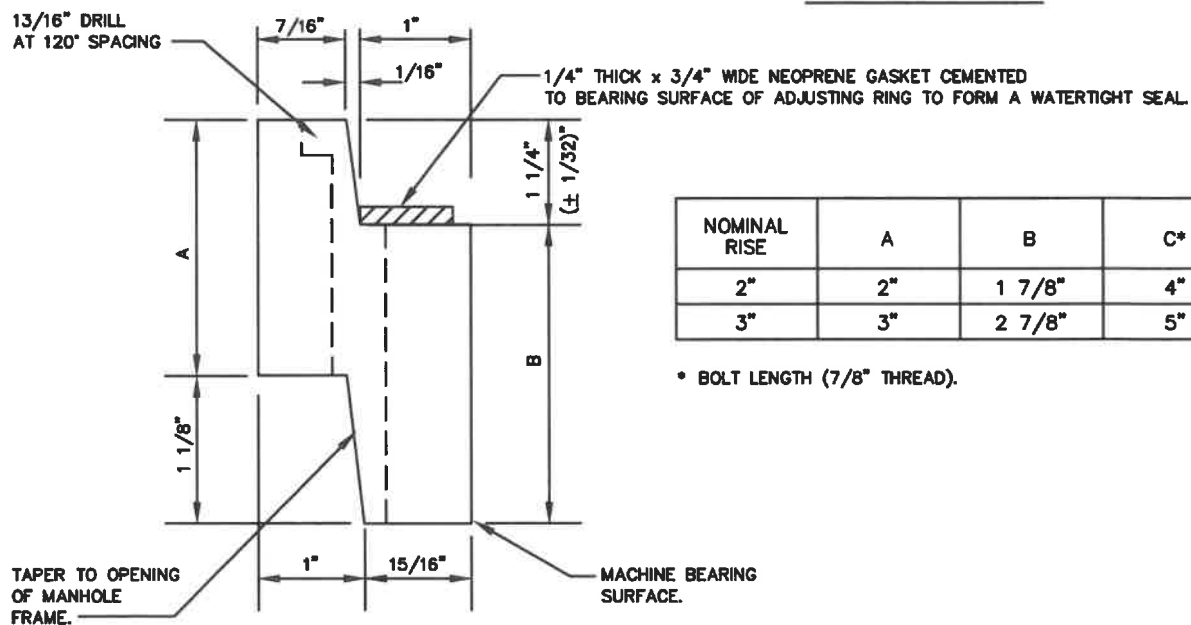
PROVIDE THREE 13/16" BOLT HOLES 120° APART IN ADJUSTING RING PROVIDE 5/8" # S.S. BOLTS.



PLAN



SECTION B-B



SECTION THROUGH
ADJUSTING RING

NOMINAL RISE	A	B	C*
2"	2"	1 7/8"	4"
3"	3"	2 7/8"	5"

* BOLT LENGTH (7/8" THREAD).

WASHINGTON
SUBURBAN
SANITARY
COMMISSION

APPROVED: 7-7-21

Mike Hammer
Chief Engineer

STANDARD DETAIL
ADJUSTING RINGS
FOR 22-INCH OPENING
WATERTIGHT MANHOLE
FRAME & COVER

S
4.0