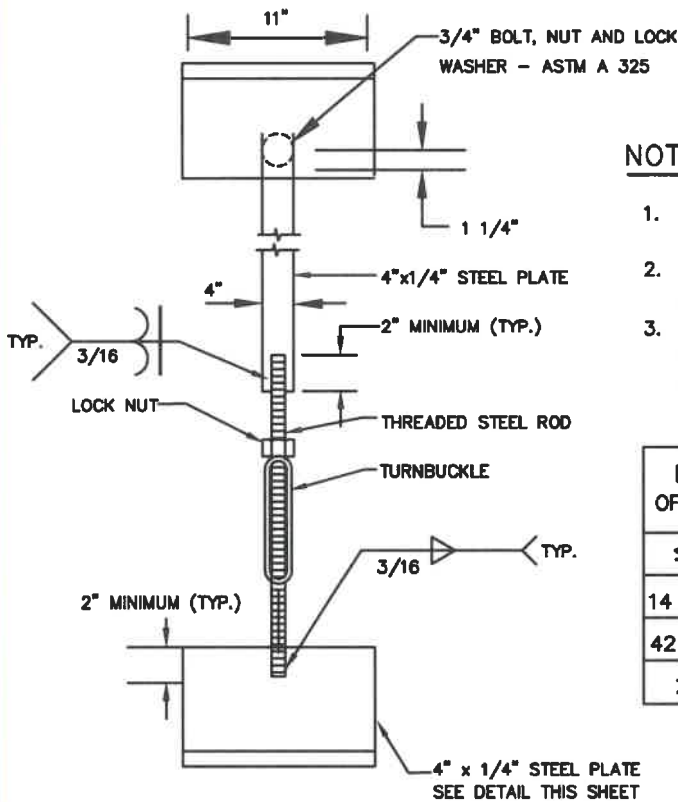


**HOLD DOWN ASSEMBLY DETAIL**



**STRAP DETAIL FOR CONNECTION TO LONGITUDINAL FLANGE OF LINER PLATES**

**NOTES:**

1. AFTER HOLD DOWN ASSEMBLY IS IN PLACE, TOUCH UP WITH COAL TAR EPOXY.
2. FOR OTHER REQUIREMENTS, SEE DETAILS M/17.1, M17.2 AND M/17.4.
3. COAT WELD AREA WITH FIELD COATING, OVERLAP FIELD COATING ONTO HOLD DOWN ASSEMBLY AND CASING PIPE A MINIMUM OF 2 INCHES.

DIA. OF PIPE	SIZE		NO. OF ASSEMBLIES PER LENGTH OF DIP
	TURNBUCKLE	THREADED ROD	
≤12"	1/2"	1/2"	1
14 TO 36	3/4"	3/4"	2
42 & 48	1"	1"	2
>48	SPECIAL DESIGN REQUIRED		

WASHINGTON  
SUBURBAN  
SANITARY  
COMMISSION

APPROVED: 6/17/21  
*Mike Harmer*  
Chief Engineer

STANDARD DETAIL  
**HOLD DOWN ASSEMBLY  
FOR STEEL CASING PIPE**

**M**  
**17.3**