

NOTES: MANHOLE

1. SHALLOW MANHOLE IS WITHOUT 48" RISER. TOPSLAB TO BE SAME AS MIDDLE SLAB EXCEPT FOR 36" OPENING.
2. FOR ADDITIONAL INFORMATION, SEE DETAIL S/1.0 NOTES 1 THRU 9.
3. SLAB ON 48" DIAMETER RISER TO HAVE 36" OPENING AND SLAB THICKNESS TO BE 9". REINFORCING TO BE SAME AS MIDDLE SLAB.
4. FOR SEWERS 36" AND LARGER, SEE DETAIL S/3.4.
5. WHEN THE DIMENSION FROM THE INVERT OF MANHOLE TO FRAME AND COVER IS 20'-0" OR GREATER, USE SAME SIZE DIA. MANHOLE AS MANHOLE BASE SECTION. PROVIDE ALUMINUM LADDER, SEE DETAILS M/16.0 AND M/16.1 AND FALL PREVENTION SYSTEM, SEE SPECIFICATIONS AND DETAIL S/1.4

STD. WATERTIGHT MANHOLE FRAME AND COVER. SEE DETAIL S/4.3

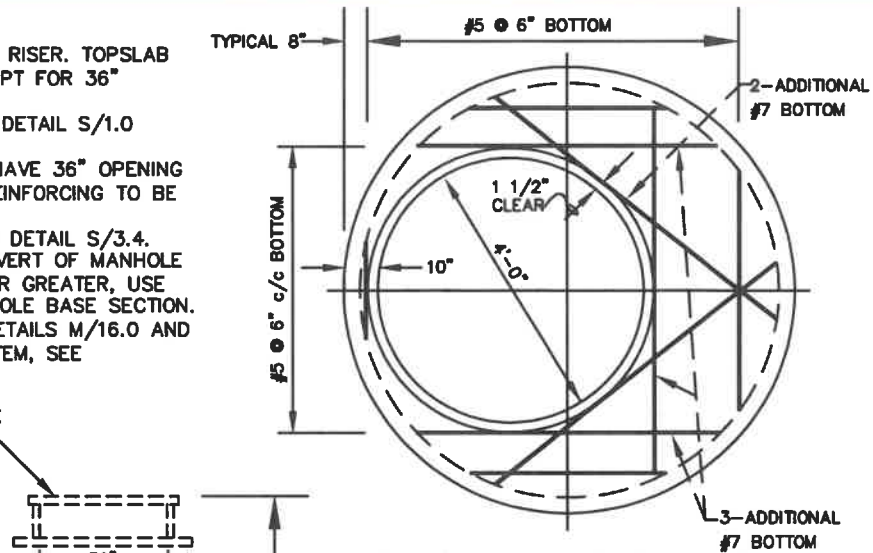
SEE DETAIL S/4.3 FOR TRANSITION REQUIREMENTS

FIRST STEP NOT TO EXCEED 6" FROM TOP OF PRECAST SECTION

FLEXIBLE GASKET JOINTS

MIDDLE SLAB, SEE PLAN ABOVE FOR DESIGN.

BACKFILL EXCAVATION BELOW PIPE WITH GRANULAR BEDDING TO TOP OF PIPE.



PLAN VIEW - MIDDLE SLAB

NOTES: MIDDLE SLAB

- A. SLAB THICKNESS 12".
- B. REINFORCING STEEL SHALL HAVE MINIMUM 1-1/2" COVER.
- *C. WHEN DEPTH OF 48" RISER EXCEEDS 10'-0", DO NOT USE MIDDLE SLAB AND 48" RISER. USE SAME SIZE RISER AS BASE SECTION.

CONE TRANSITION MAY BE USED IN LIEU OF 12" SLAB.

TYPICAL MANHOLE STEPS, SEE DETAIL S/1.0 AND NOTE 5.

72", 84" OR 96" DIA. PRECAST BASE SECTIONS

FLEXIBLE GASKET CONNECTOR

BENCH

CHANNEL LINING

4", UNLESS MANHOLES DEEPER THAN 16'-0" USE 6"

MANHOLE BASE TO BE BEDDED IN 6" MINIMUM GRANULAR BEDDING ON FIRM SUBGRADE.

PRECAST BASE REINFORCED W/#6 @12" c/c. EACH WAY.

8" CLEAR

STANDARD DETAIL
72-INCH, 84-INCH AND
96-INCH DIAMETER
PRECAST CONCRETE
MANHOLE

WASHINGTON
SUBURBAN
SANITARY
COMMISSION

APPROVED: 5-5-21

M. H. Harris

Chief Engineer

S
1.2