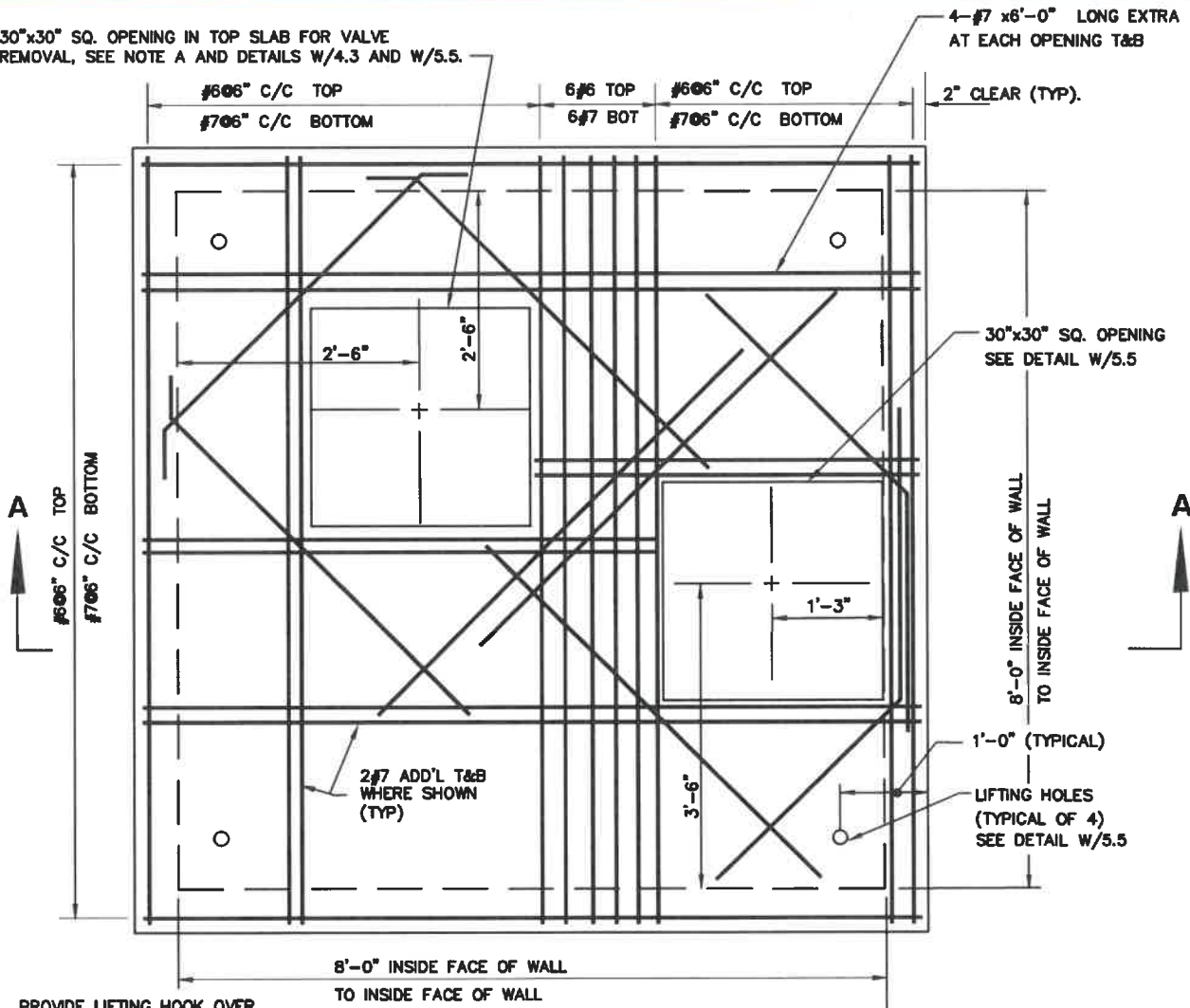
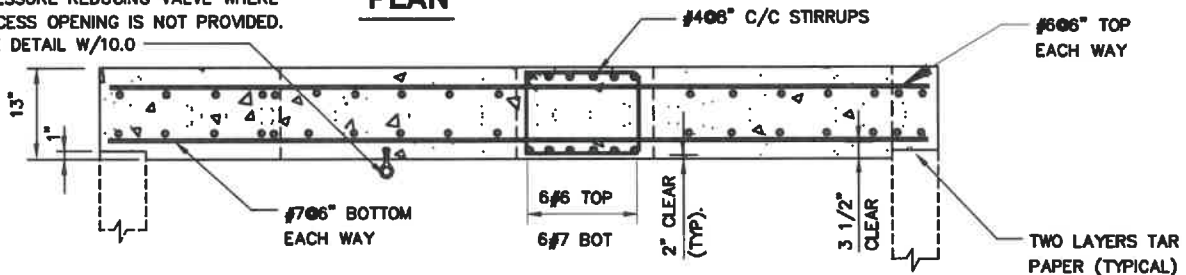


30"x30" SQ. OPENING IN TOP SLAB FOR VALVE
REMOVAL, SEE NOTE A AND DETAILS W/4.3 AND W/5.5.



PROVIDE LIFTING HOOK OVER
PRESSURE REDUCING VALVE WHERE
ACCESS OPENING IS NOT PROVIDED.
SEE DETAIL W/10.0

PLAN



SECTION A-A

CAST IN PLACE CONCRETE TOP SLAB NOTES

1. $f'_c = 4000$ PSI. @ 28 DAYS
2. $f_y = 60,000$ PSI.
3. TOP SLABS ARE DESIGNED FOR THE FOLLOWING CONDITIONS:
 - a). H20LL + 0% IMPACT+ 3.5' MAXIMUM EARTH COVER
 - b). H20LL + 30% IMPACT+ 1' EARTH COVER
4. CONTRACTOR MAY USE PRECAST TOP SLABS, SEE SPECIFICATIONS FOR SUBMITTAL REQUIREMENTS.
5. FOR ADDITIONAL INFORMATION, SEE DETAILS W/4.3 AND W/4.7.

VALVE REMOVAL OPENING NOTES:

- A. FOR 4" VALVE NO OPENINGS ARE REQUIRED.
PROVIDE 1 PIECE TOP SLAB REINFORCED
AS PER DETAIL W/5.2

WASHINGTON
SUBURBAN
SANITARY
COMMISSION

APPROVED: 2-26-21
Mike Hammer
Chief Engineer

STANDARD DETAIL
CAST IN PLACE CONCRETE TOP
SLAB FOR DUEL PRESSURE RELIEF
AND TYPE "2" LAYOUT PRESSURE
REDUCING VALVE VAULTS

W
5.23