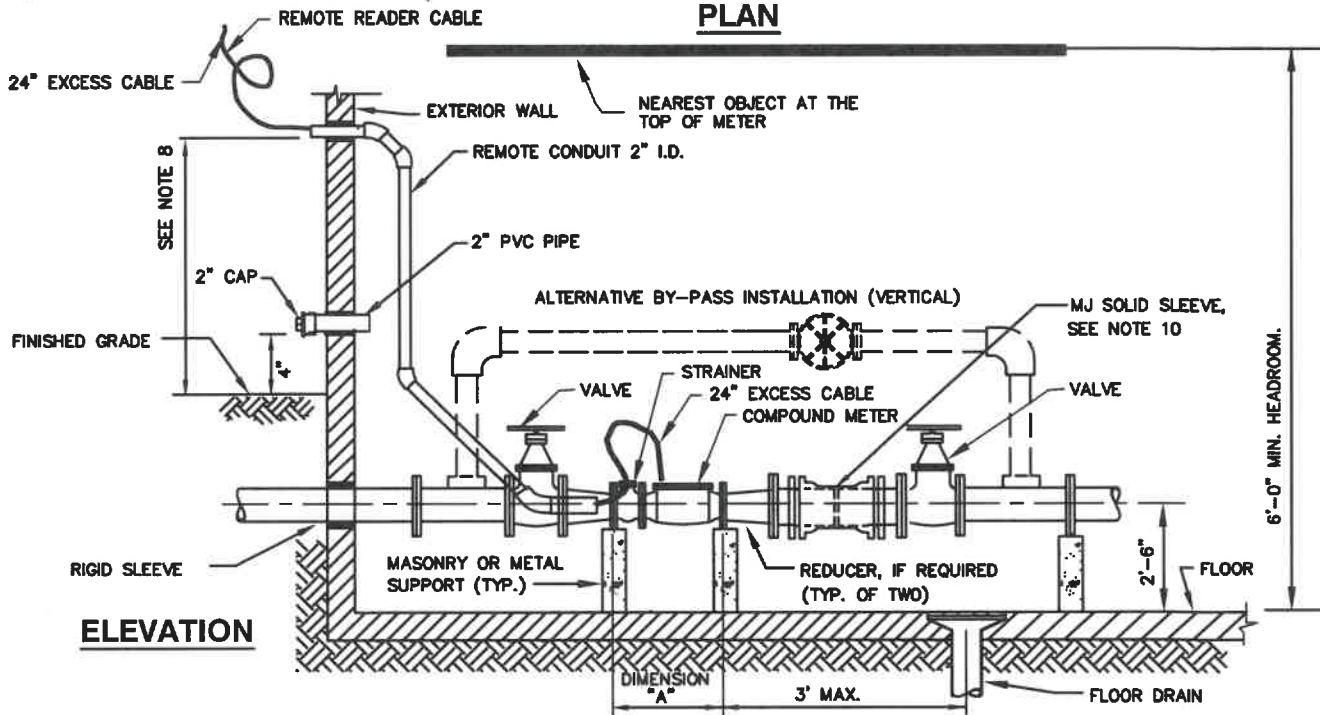


**PLAN**



**ELEVATION**

COMPOUND METER SIZE	BY-PASS PIPE SIZE	DIMENSION "A" (LENGTH OF METER AND STRAINER)
3"	2"	24"
4"	2"	29"
6"	4"	36.5"

**NOTE:**

1. FLANGE BOLTS SHALL BE READILY ACCESSIBLE.
2. METER TO BE SET HORIZONTALLY.
3. FOR METER SETTING WHEN METER ROOM IS NOT ADJACENT TO EXTERIOR BUILDING WALLS, SEE DETAIL W/7.5
4. TURBULENCE COMPENSATOR MINIMUM 5 PIPE DIAMETERS INLET AND OUTLET.
5. METER NOT TO BE SET WITHIN 10' OF ELECTRICAL DISTRIBUTION EQUIPMENT.
6. REMOTE READER CONDUIT - NO BENDS GREATER THAN 45 PER FITTING UNLESS USING A 90° SWEEP.
7. SECURE REMOTE READER CONDUIT TO WATER SERVICE LINE.
8. LOCATE EXIT POINT FOR REMOTE READING DEVICE 2-1/2' TO 4' ABOVE FINISHED GRADE AND ON SAME WALL AS ELECTRIC METER. IF ELECTRIC METER IS LOCATED AT REAR OF BUILDING, LOCATE EXIT POINT IN FRONT OF BUILDING. REMOTE READER CABLE TO BE SUPPLIED BY WSSC.
9. TAMPER RESISTANT AND LOCKABLE TYPE BALL VALVE WHEN 2" AND SMALLER, OTHERWISE THE VALVE SHALL BE SEALED "CLOSED" WITH SECURITY WIRE BY WSSC.
10. PROVIDE M.J. SOLID SLEEVE WHERE SHOWN WITH WEDGE ACTION RESTRAINER GLAND, SEE SPECIFICATIONS. TOLERANCE BETWEEN PIPE ENDS SHALL NOT EXCEED 1/2". DO NOT USE PIPE SPACERS, SEE SPECIFICATIONS.

WASHINGTON  
SUBURBAN  
SANITARY  
COMMISSION

APPROVED: 7-26-21  
*Mike Hammer*  
Chief Engineer

STANDARD DETAIL  
3-INCH, 4-INCH AND 6-INCH  
INDOOR COMPOUND METER  
WHEN METER ROOM IS ADJACENT  
TO EXTERIOR BUILDING WALLS

W  
7.4