



# White House Road Transmission Water Main Replacement

Project No. BT6703A19

December 7, 2021

# AGENDA

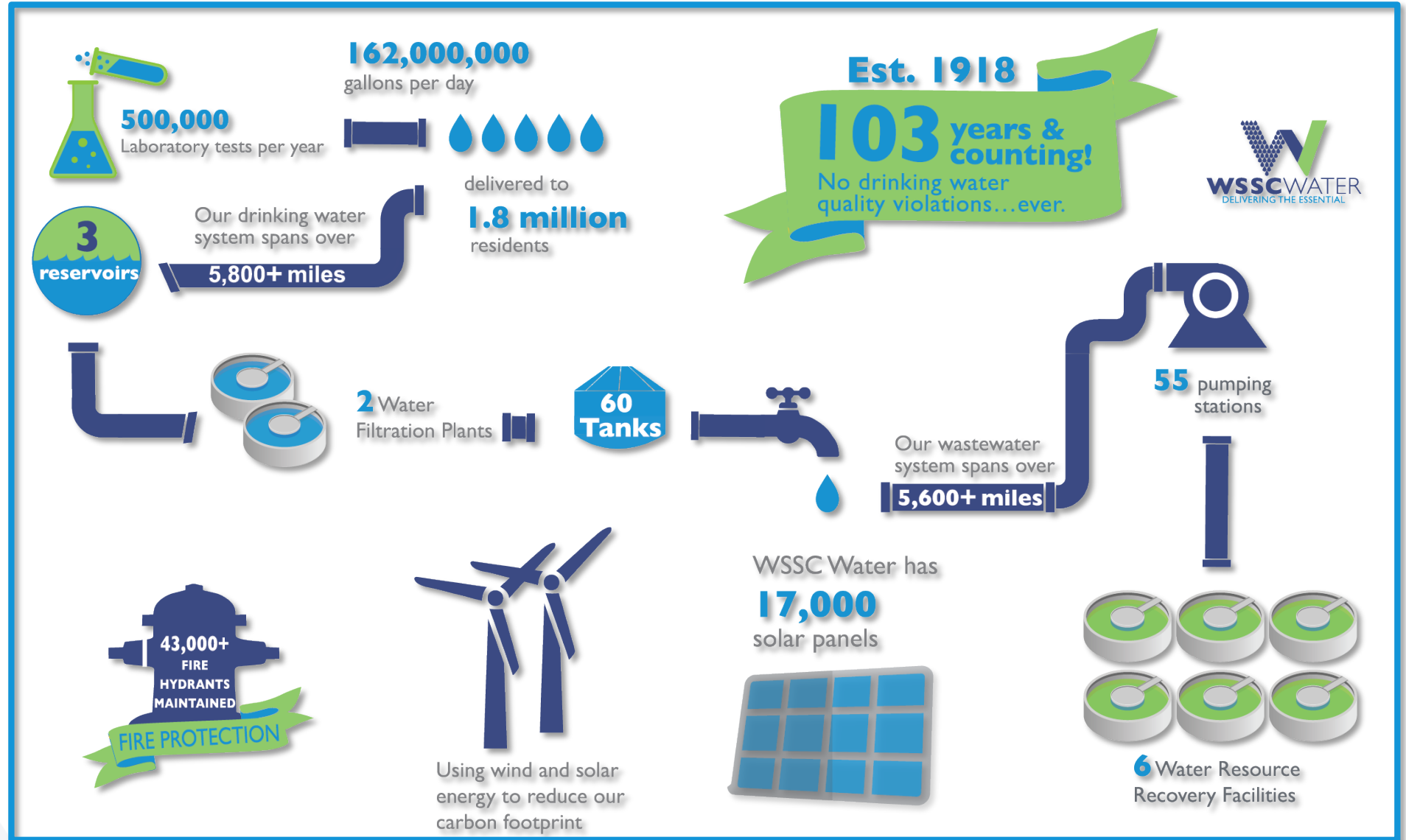
- Introduction to Project Team
- WSSC Water Overview
- Project Overview
- Project Map
- Estimated Construction Schedule
- What to Expect During Construction
- Project Summary
- Questions & Answers

# Project Team

- Garth Weston, Design Project Manager  
301-206-7136, [Garth.Weston@wsscwater.com](mailto:Garth.Weston@wsscwater.com)
- Tim Allen, Technical Contract Supervisor  
301-206-2432, [Tim.Allen@wsscwater.com](mailto:Tim.Allen@wsscwater.com)
- Stephen Billingsley, Customer Advocate  
240-444-5803, [Stephen.Billingsley@wsscwater.com](mailto:Stephen.Billingsley@wsscwater.com)
- The Wilson T. Ballard Company, Engineering Design Consultants
- Rustler Construction, Inc., Construction Contractor



# WSSC Water Overview

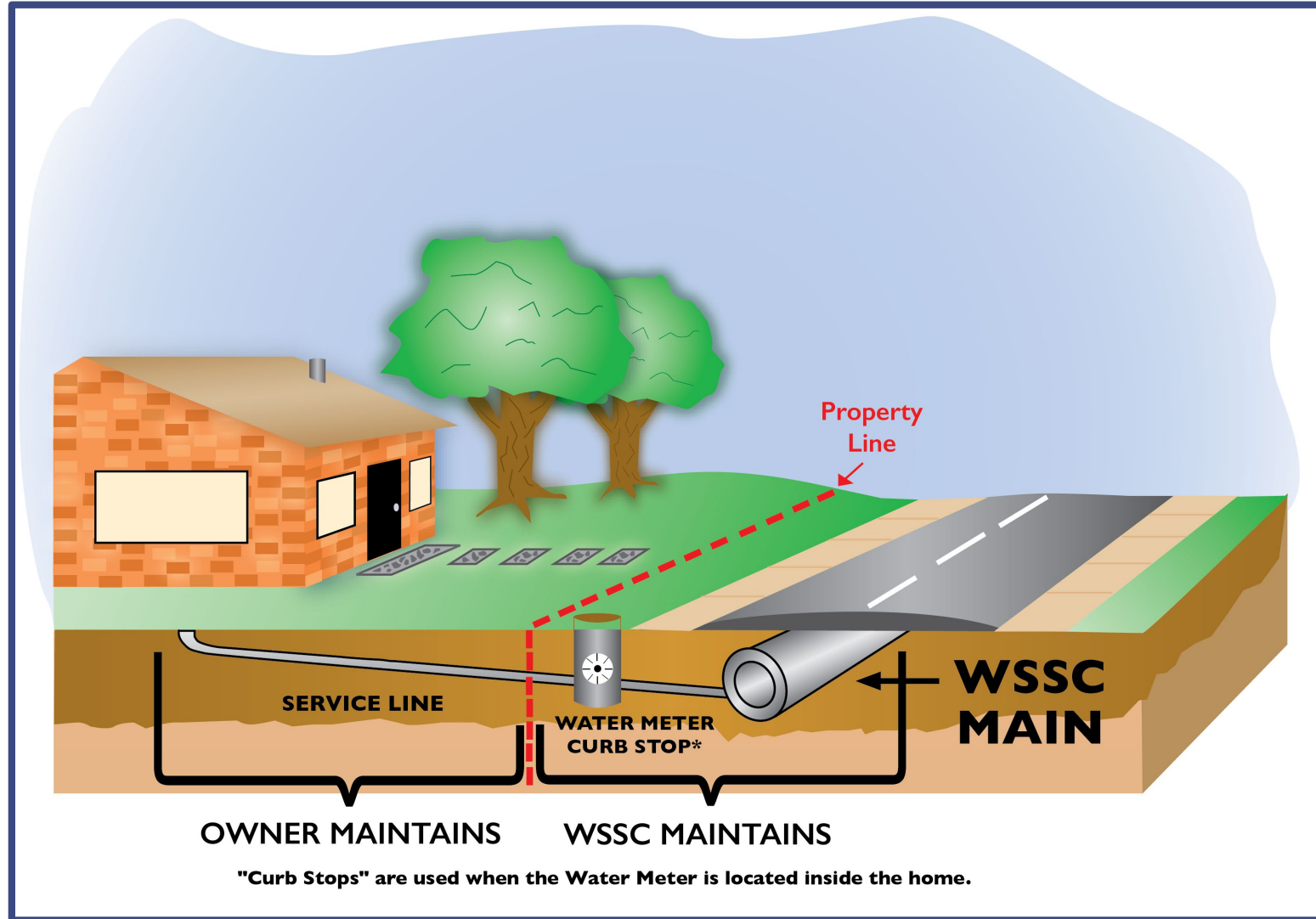


# Project Overview

- WSSC Water is strategically replacing and rehabilitating our aging water and sewer pipes throughout our service area, a part of our effort to enhance service and reliability to our customers.
- The project includes replacing approximately 1.61 mile of water mains, and house connections up to the property line.
- The current water pipes were installed in the 1960's and 1970's and are nearing the end of their life cycle.
- The new water mains will be zinc-coated, ductile iron pipe wrapped in a protective coating, giving the pipes a life expectancy of at least 100 years.
- Replacing the existing pipes will help reduce disruptions to the community, the environment and emergency services due to water main breaks.

# Project Overview

- New watermain will be installed within the roadways
- New house connections (service lines) will be installed up-to the property line
- WSSC Water coordinates with local and state agencies, as well as other utilities for all planned work to avoid potential conflict and minimize disturbances to neighborhoods.

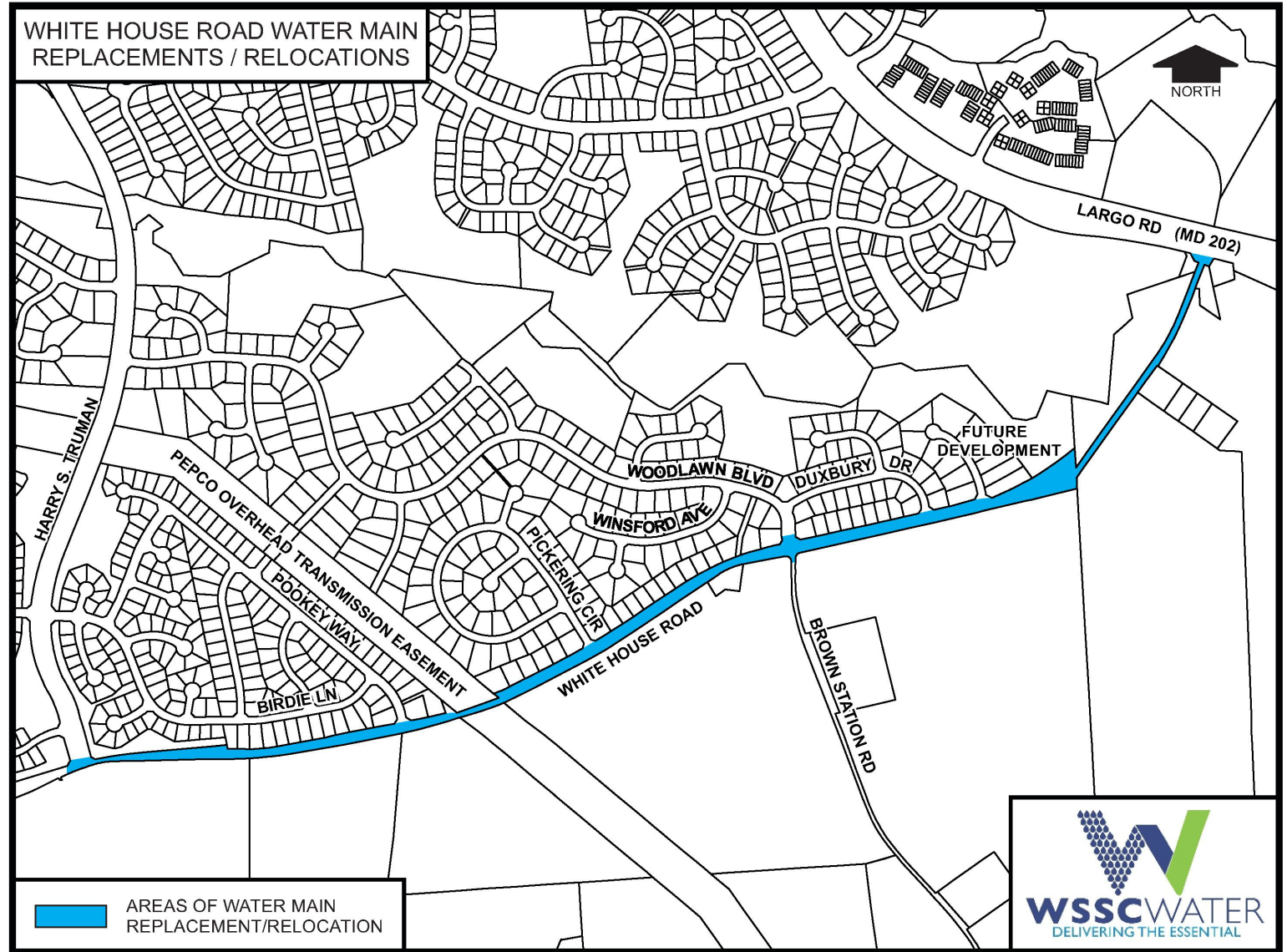




# Project Map

## Directly Impacted Streets

White House Road  
Duxbury Drive  
Brown Station Road  
Woodlawn Boulevard  
Pickering Circle  
Pookey Way  
Harry S. Truman Drive



# Estimated Construction Schedule

Anticipated Construction Start: January 2022  
Estimated Construction Completion: Summer/Fall 2023

*Construction schedules are estimated and weather permitting*



# Operational Changes in response to Covid-19

- WSSC Water has implemented protocols that align with recommendations from local, state, and federal public health authorities.
- Working to minimize impact
  - Facial masks (while indoors) and physical distancing
- All WSSC Water employees and contractors are required to refrain from coming to work if displaying symptoms of COVID-19.
  - We have implemented robust internal contact tracing and quarantine requirements.
- Earlier notification to customers
  - Contact via handouts



# What to Expect During Construction

- Anticipated Work Hours: Monday-Friday, 9:00 a.m. – 3:30 p.m.
  - Work may occasionally extend beyond these hours to complete specific tasks.
- Construction activities may include:
  - Field reviews and inspections
  - Survey crews
  - Test pits
  - Construction crews and heavy machinery
- Reliable water and sewer service will be maintained during construction
  - Short water shutdowns of up to 8 hours may be required
  - Advanced notification (48-72 hours) of these shutdowns will be provided





# What to Expect During Construction

- Open-cut construction method, which involves cutting and excavating a section of the pavement.
- This construction method does create noise and dust.





# Temporary Water Service Installation

- Above-ground (bypass) pipes may be installed to maintain water service to your home.
  - Bypass pipes are not used in cold weather months
- These pipes will be placed along the roadway edge and provide the same quality of water to your home.



# Traffic Impacts

- Certain construction activities may require temporary changes to traffic patterns
  - Traffic will be managed to minimize community disruptions
- Access will be maintained to homes during construction
  - Access into homes is **NOT** required
  - Access onto private property is generally **NOT** required
- Parking restrictions
  - WSSC Water will provide 48-hour advance (denoted by “No Parking” signs) notice prior to any parking restrictions
  - Any vehicles that have not been removed from the designated area will be towed to a nearby street at no cost to the owner.
- Final restoration of sidewalks, roadways and landscaping will take place within 90 days of construction completion.





# Signage and Restoration

- Construction signs with contact persons will be placed throughout the project area
- Projects completed during the winter months will be permanently paved and restored to their original state or better in the following spring.





# Project Summary

- The existing distribution system water mains are near the end of their useful lives.
- WSSC Water will be replacing the distribution system water mains and water house connections up to the property line.
- WSSC Water will minimize service disruptions during construction.
- WSSC Water will coordinate work activities with property owners in the project area.
- WSSC Water will restore all areas impacted by construction activities at the end of the project.
- WSSC Water's goal is to provide a reliable water system to customers.

# THANK YOU! QUESTIONS?

